

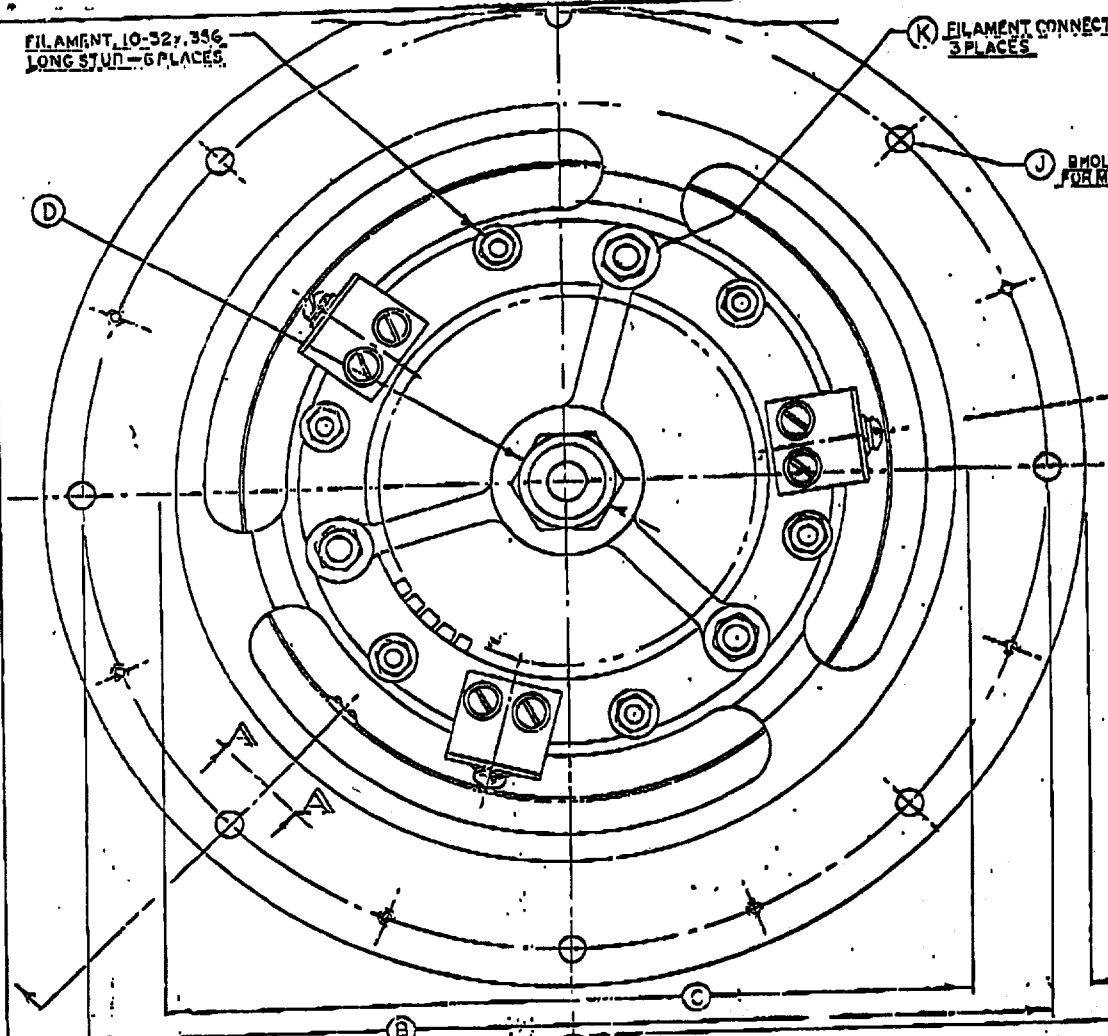
DIMENSIONAL DATA

DIM	INCHES			MILLIMETERS		
	MIN	MAX	REF	MIN	MAX	REF
A	10.530	10.595		267.46	269.06	
B	5.977	5.827		151.84	148.61	
C		6.250			160.02	
D			1.000			25.40
E			3.555			90.31
F			.580			14.73
G			.171			4.34
H	.190	.210		4.83	5.34	
J	.255	.285		6.48	7.24	
K	1/4	20 UNC	-2.5			6.35
L			.375			9.53
M	.149	.153		3.78	3.91	
N	3.850	3.850		97.78	97.78	
P	4.205	4.225		106.81	107.31	
R	4.455	4.475		113.16	113.66	

FILAMENT, 10-32x.356,
LONG STUD - 6 PLACES.

(K) FILAMENT CONNECTION
3 PLACES

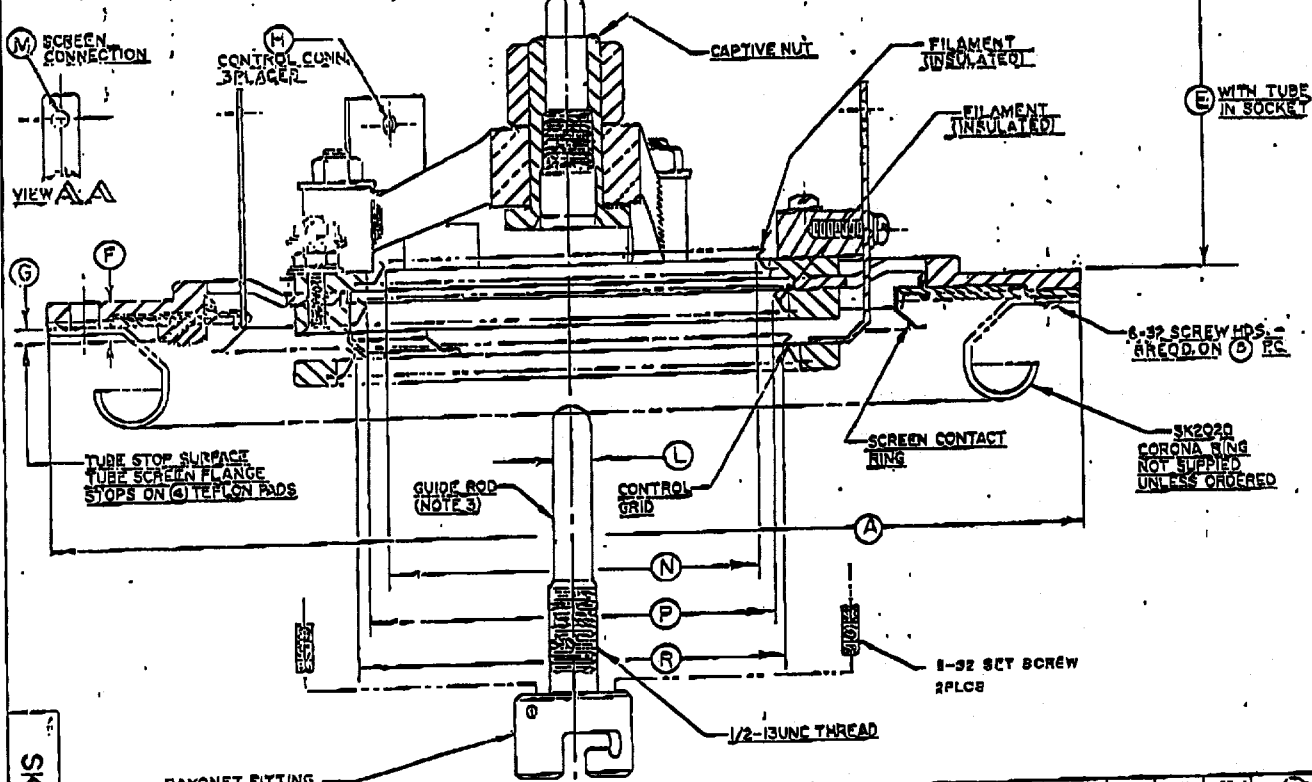
(J) HOLES
FOR RIG.



NOTES:

1. REF DIMENSIONS ARE FOR INFO ONLY & ARE NOT REQUIRED FOR INSPECTION PURPOSES.
2. SCREEN BY-PASS CAPACITOR: 11,500P/21,000P/4,000 VDC TEST.
3. ATTACH GUIDE ROD TO CROSS PIN IN TUBE BASE WITH BAYONET FITTING. TO SOCKET TUBE, INSERT END OF GUIDE ROD IN CAPTIVE NUT, ENGAGE THREADS & SEAT TUBE IN SOCKET BY ROTATING NUT.
CAUTION: APPLY ONLY SUFFICIENT TORQUE TO SEAT TUBE SCREEN FLANGE FIRMLY & EVENLY AGAINST STOP PADS.

CLEAR AREA FOR
MOUNTING (13.00)



BAYONET FITTING
8-32 SCREWS (2 REQ'D)
LOCK FITTING TO TUBE

SK2011A-60

REV	DESCRIPTION OF CHANGE	DATE	BY
1	REDRAWN/PIC. ADD. 10-32 NUTS & WASHERS	5-2-76	...
2	ADD. SK2020 CORONA RING	12-13-76	...
3	REPOSITIONED CORONA RING	11-31-79	...
4	ADDED DIMS. N, F & R	11-28-80	...
5	REVISED NOTE 2; ADD PICTURE 8-32 SET SCREW.	7/1/82	...

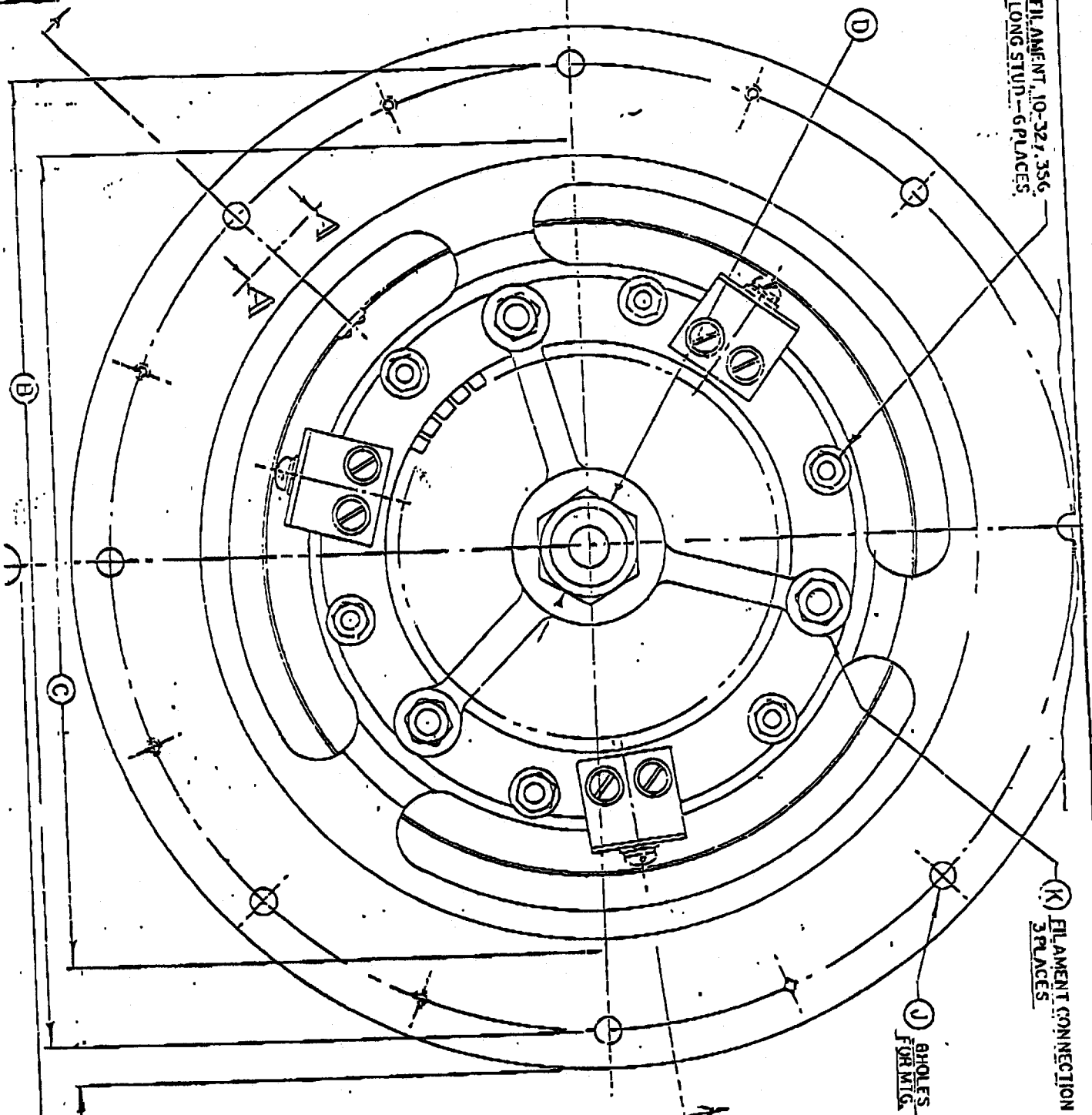
EIMAC, division of Philips
San Carlos, California

DATE IDENT NO. 0090
PART NO. SK-2011A
OUTLINE SOCKET
ELECTRON TUBE

SCALE: NONE

NO. SK2011A-60 F

FLAMENT 10-327-356
LONG STUD-6 PLACES.



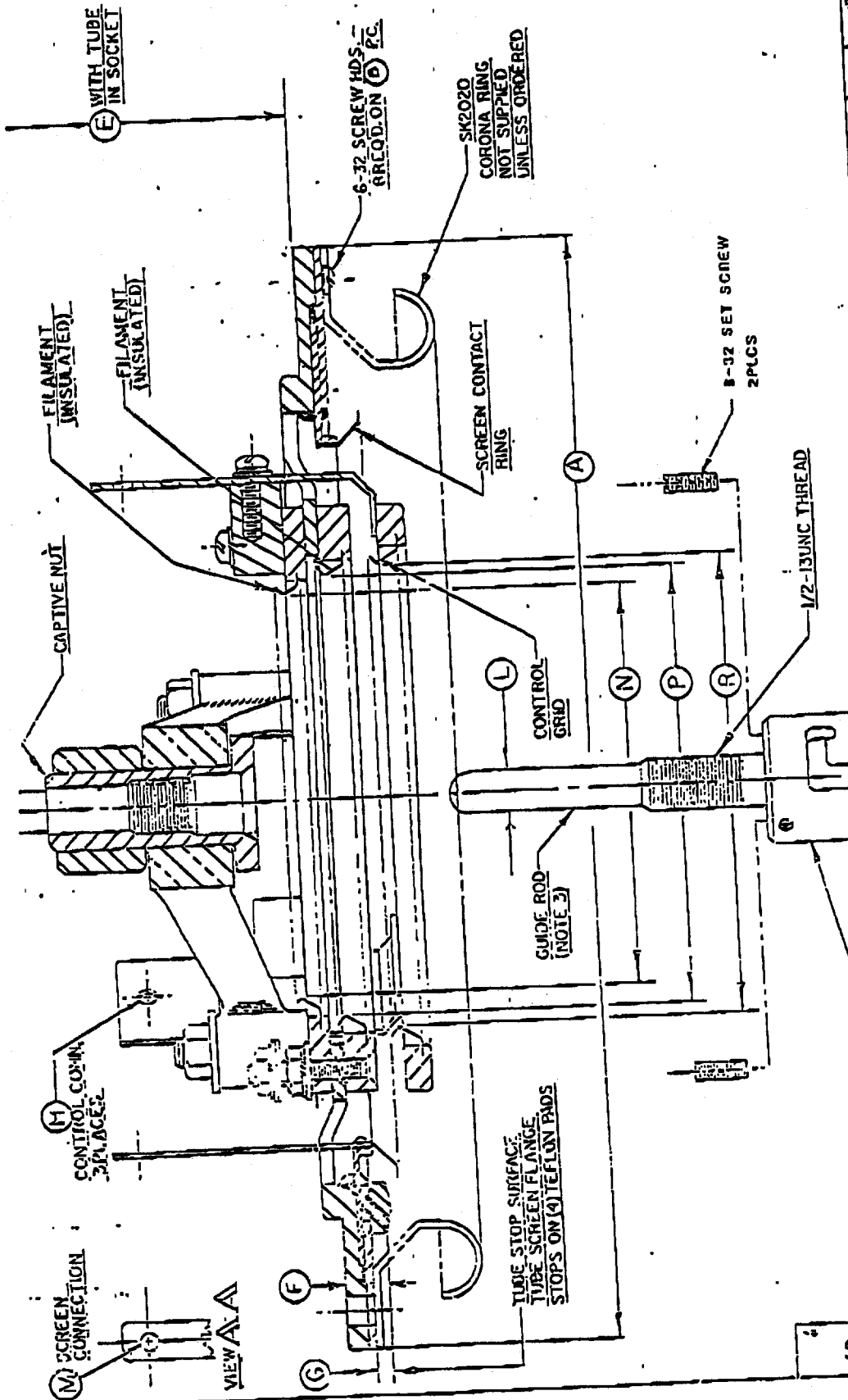
(K) FLAMENT CONNECTION
3 PLACES

(J) HOLES
FORMING

DIM	INCHES		MILLIMETERS	
	MIN	MAX	MIN	MAX
A	1.0530	1.0593	26.746	26.906
B	9.797	9.827	248.84	249.61
C		8.230		209.55
D		1.000		25.40
E		3.595		91.31
F		.480		12.19
G		.171		4.34
H	.150	.218	3.81	5.54
J	.255	.285	6.48	7.24
K	1/4	20 UNC-20		
L		.375		9.53
M	1.49	1.63	3.78	4.14
N	3.830	3.850	97.28	97.79
P	4.205	4.225	106.81	107.31
R	4.435	4.475	113.16	113.66

CLEAR AREA FOR
MOUNTING (360)

NOTES:
1. REF DIMENSIONS ARE FOR INFO ONLY & ARE NOT REQUIRED FOR INSPECTION PURPOSES.
2. SCREEN BY-PASS CAPACITOR: 11.500F -14,000VDC 4,000 VDC TEST.
3. ATTACH GUIDE ROD TO CROSS PIN IN TUBE BASE WITH BARONET FITTING.
4. ATTACH GUIDE ROD TO CROSS PIN IN TUBE BASE WITH BARONET FITTING.
5. GUIDE ROD INCAPTIVE NUT ENGAGE THREADS & SEAT TUBE IN SOCKET B) ROTATING NUT.
6. TORQUE TO SEAT TUBE SCREEN FLANGE FIRMLY & EVENLY AGAINST STOP PADS.



REV	DATE	BY	DESCRIPTION OF CHANGE
27463	3-2-76	YH/M	REDRAWN/PICT. ADD. 10-32 NUTS & WASHERS
28267	12-13-76	YH/M	ADD. SK2020 CORONA RING
20967	3-17-76	YH/M	REPOSITIONED CORONA RING
29953	11-28-80	YH/M	ADDED DIMS. N, P & R
31088	7/11/88	BC/DB	REVISED NOTE 2; ADD PICTURE 0-32 SET SCREW

DAYONET FITTING
 B-32 SCREWS (REQU.)
 LOCK FITTING TO TUBE

SK2011A-60

EIMAC, division of Varian
 San Carlos, California
 CODE BOOK NO. 06980
 PART NO. SK-2011
 OUTLINE SOCKET
 ELECTRON TUBE
 No SK2011A-60

SCALE: NONE
 DRAWN BY: YH/M
 CHECKED BY: YH/M
 SUPERVISOR: PRC-2988
 P. 4